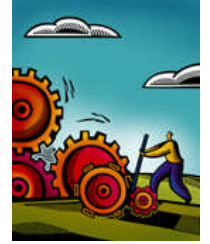




The Visitor



Volume 9 Issue 4

Wilshire United Methodist Church, English Ministry

Sunday, August 3, 2008



As an inclusive and welcoming congregation nurtured by love, we seek to: Celebrate diversity, nurture spirituality and reach out with compassion.

Inside this issue:

The Pastor's Thoughts	1
Congratulations Bishops	2
Honoring Maggie Cooper	2
Stewardship	2
Prayer of Hope	2
Worship Team	3
AIDS HRISIS	3
UMW Awards	3
Youth Leadership Team	3
Going to Japan	4
Finance	4
Cal-Pac Conference	5
Christian Mission School	6
Music Ministry	6
Calendar	8-9
New Members	10
Olympic Fever	10
Balancing Quality & Cost	11
Laugh With Celeste	12
Health News	13
Did You Know?	14
Recipe	14
Happy Birthday	15

Pastor's Thoughts

Rev. Dr. Ken J. Walden



Hello Wilshire UMC Family, Friends, and Visitors,
 As your Pastor, I would like to share with you a special date for Michelle and me. This August 4, 2008 is our 7th year wedding anniversary! Michelle has been instrumental in my ministry and in our ministry together since we met at Duke University at our respective Graduate Schools. I most likely could not have accomplished some of my past accomplishments without her supportive partnership. It would be challenging for me to continue to work toward greater goods today without her loyal love for me and what we share together. I love Michelle.



As many of you know, some of the callings (church, academia, and military) on my life often have me in several places managing several assignments. However, I am most proud of my calling to be a Husband to Michelle. By God's grace, Michelle and I are celebrating 7 years of marriage at Wilshire UMC. I feel truly blessed.

Michelle and I had a wonderful time in Roatan, Honduras last month. I have shared some pictures inside this newsletter of that meaningful trip.

On Sunday August 3rd, I will give "**The State Of Our Church Address**" to highlight where we have been together, where we are together, and where we intend to go together. I am reminded on August 28, 1963 at the Lincoln Memorial in Washington, D.C. Rev. Dr. Martin Luther King, Jr. gave his famous "I Have A Dream" speech. I am glad you and I continue to have dreams for our church and we are willing to work together to make them a reality.

On Sunday August 31st we will present our "**3 Year Strategic Plan**" and begin to officially work towards our identified goals.

In September we celebrate "Labor Day" and we should be mindful the importance of rest in the midst of our work. We should take note of the Gospel of Matthew 11:28 that consists of the following words of Jesus,

"Come to me, all of you who are weary and burdened, and I will give you rest."

Thank you for your cooperation in ensuring that our church continues to be a *Church for All God's People!*

Take care and take God!

Grace and Peace.

CONGRATULATIONS TO REV. DR. GRANT HAGIYA AND BISHOP MARY ANN SWENSON!

By Connee Freeman

On Friday, July 18th, the Western Jurisdictional Conference of the United Methodist Church elected the Rev. Dr. Grant Hagiya, the former Los Angeles District Superintendent, a Bishop!

He will serve the Seattle Area, which includes all of Washington State and Alaska. He was consecrated at First United Methodist Church of Portland in the afternoon. Congratulations, Bishop Hagiya! On Sunday afternoon, August 3, the California-Pacific Conference will honor him at a farewell reception at Glendale First United Methodist Church.

On Saturday, July 19th, the Western Jurisdictional Conference also assigned Bishop Mary Ann Swenson to a third term in the California-Pacific Annual Conference. The Conference is happy and relieved to welcome her back. A reception in Bishop Swenson's honor will be held on Saturday afternoon, October 4th, at Pasadena First United Methodist Church.

HONORING MAGGIE COOPER

By Connee Freeman

On Sunday, June 29th, the Wilshire Ministry threw a wonderful "farewell" party for our beloved Maggie Cooper! Former Sunday School students, friends and former church members gathered at the worship service to watch the youth pay tribute to Maggie who has served the Wilshire United Methodist Church faithfully for more than sixty years. The Youth Choir sang, the Praise Team danced as the children expressed their love for Maggie. She was presented with a beautiful plaque, a certificate, a floral bouquet and an exquisite vase of

roses, designed by Louverne Cooper, made from dollar bills that the children had contributed. Each leaf of the roses was inscribed with a message of gratitude from the children.

Following the worship service the entire Wilshire Family, as well as members from the other ministries, gathered in the beautifully decorated Fellowship Hall for food and merriment. Everyone had an opportunity to visit with Maggie and have pictures taken by our own Len Pringle, the English Ministry's official photographer. These photos can also be viewed on the Wilshire Ministry website, www.ewilshireumc.org.

STEWARDSHIP COMMITTEE MID YEAR REPORT

The Stewardship Committee has concluded the final tally of our pledge cards. We have thirty eight pledges for the year. Our pledges represent 58% of what we budgeted for our giving income, leaving a 42% shortfall. This is a significant gap between budgeted and pledged. We hope to make up this shortage from loose collection and other fund raising efforts proposed through the year. There might be individuals who might want to finance a particular project or program. This committee is open to your ideas, help and suggestions. So please contact Phil Freeman, Ernie Stroman, Rene Ramos, me or another member of our committee with your ideas.

Our **Three Year Strategic Plan** calls for a fund creation to finance a **Vigorous Youth Program, Music Program and Communication Program**. These are areas in which we are inviting any who are financially able and willing to participate. Wilshire is a great church and your contribution will keep it that way. God bless.

Elon Gunning, (chairman)

Unison Prayer For A Vision Of Hope

We pray that someday an arrow will be broken,
Not in something or someone, but by each of humankind,
to indicate peace, not violence.
Someday, oneness with creation,
rather than domination over creation,
will be the goal to be respected.
Someday fearlessness to love and make a difference
will be experienced by all people.
Then the eagle will carry our prayer for peace and love,
and the people of the red, white, yellow, brown,
and black communities can
sit in the same circle together to communicate in love,
and experience the presence of the Great Mystery
in their midst.
Someday can be today for you and me. Amen

This prayer was used at the United Methodist School of Christian Mission opening plenary. It was written by Wanda Lawrence, Chippewa.

Worship Team

By Joe Leverette

The Worship Team is still trying to create opportunities for our church and our community to respond to God. We have had many suggestions from members of the congregation. We welcome your input and add your ideas to our monthly meeting agenda. Our belief is that we are all in this together. In our ever changing world and society we need individual support as well as the support of our community. We may wonder whose support is primary, the individual or the community. Does the individual exist to meet the needs of the community or does the community exist to meet the needs of the individual? The church is charged and challenged to create and maintain a Christian balanced atmosphere to meet the needs of both. This committee works diligently to make Wilshire the church who offers God's grace, found in Jesus Christ to all who are in need. The Worship Team is working to ensure that each worshipper will have the hands-on experience of worshipping God in a community of faith, and being a part of a faithful assembly of people, who pray, care and build relationships with each other and our community.

It will always be our desire to present a worship program that will lift up the hearts and souls of those who enter our doors. Our worship services are based on the belief that all people are created to worship God, and that all are invited to experience the grace and love of Jesus Christ. We thank you for your participation and support, as our ministry continues to reach out to people, relating them to God, nurturing them in the faith and sending them out to live as disciples in the community and in the world.

The Worship Team consists of: Floydette Gibson, Dulce Gunning, Penny Pan, Pastor Walden, and Joe & Maxine Leverette, Co-Chairs.

WORLD VISION EXPERIENCE ... THE AIDS CRISIS

By Connee Freeman

Did you know that around the world today, nearly 40 million people are infected with HIV, the virus that causes AIDS and that more than two million of them are children? Well, we should all be acutely aware of the AIDS pandemic that is devastating lives in the far-away lands of Africa and right down the street in our own communities. In an effort to raise awareness about this crisis in our communities, the California-Pacific Annual Conference of the United Methodist Church in partnership with World Vision is presenting "Step Into Africa", a free 3,000 square foot interactive exhibit focusing on the AIDS epidemic as perceived through the eyes of

children whose villages have been impacted by this terrible disease.

District Superintendent Cedrick Bridgeforth is encouraging all of us to attend this sobering interactive exhibit to be held at Holman United Methodist Church during the week of August 11-18, 2008, between the hours of 10am and 8pm. The AIDS Experience Planning Team is also recruiting volunteer docents to cover four 4-hour shifts each day. You may learn more about this exhibit and sign up to volunteer by visiting the exhibit website at www.worldvisionexperience.org. It is our District Superintendent's expectation that this exhibit will provide the catalyst that will motivate the Los Angeles District churches to develop AIDS education programs for the benefit of their congregations as well as the surrounding communities. Schedule this event on your calendar NOW!

UMW Scholarship Awards

The United Methodist Women are proud to present the names of scholarship awardees for the 2008-2009 school year: Angelica Soto-Mayer, Shamari Wheaton, Monique Bassey, Sylvan Edwards, Jr., Kyle Gibson, Kay Marie Longworth, Sean Collins, and Kaneshia Edwards. These students will receive their awards at the August 9 UMW meeting and will also be recognized at our Sunday worship service on August 10. We congratulate them and pray that God will bless them as they pursue their studies.

WUMC Youth Leadership Team

By Felecia Fisher-Shamu

Co-Parent Director WUMC Youth Leaders

Well, it is definitely summer and our WUMC Leadership Team has truly been working hard. Last month we paid special tribute to our most honored and loved, Maggie Cooper. Ms. Cooper served with such dedication to our youth and Sunday school for over 60 years.

Our youth shared beautiful and spiritual Praise dancing to the song "Never Would Have Made It Without You" and the choir sang. Ms. Cooper received several mementos such as, the money tree made by Lavern Cooper. This money tree was so special because all of our youth wrote something special with a contribution of 3 dollar bills. These dollar bills were carefully designed into roses.

We adored the love, support and Godly teachings from such a great woman.

Thank you Maggie!

Monique Bassey Is Going To Japan!

*Felecia Fisher-Shamu
Contributing Writer*

"I am planning to let the people of Japan know that Americans are good people and to further expose them to our culture," said Monique Bassey, WUMC member and a junior at the University of Arizona. "Yes, many people in Japan have never been exposed to Americans."

It's not something we actually think about every day, but people in other countries are unfamiliar with some of America's sports, ethnicities and our way of life.

Beginning July 18-August 6th Ms. Bassey will attend a camp near Tokyo organized by an American family designed to share American sports and languages with young Japanese children. "It's a free educational trip," said Ms. Bassey. "They do not want us to feel any financial constraints. They want us to share our experiences and get to know the children through sports."

It is true that in order to learn about different cultures and people, one must spend some time in that environment. You never know what you can learn.

Ms. Bassey attended Notre Dame High School where she was a cheerleader. Her JV Coach referred her to this program, and what do you know, today she is in Japan.

Ms. Bassey is the daughter of WUMC members, Wilson and Monica Bassey. "Monique has always been a very focused child and an overachiever," according to her father, Wilson.



Finance

When our Treasurer Dulce Gunning handed me our income and expense report through the end of June 2008, I was pleasantly shocked to realize that June was exceedingly our best income month thus far this year. Imagine that – our members donated more in June than in the Easter month of March! The summer months are traditionally the leanest months for every church. And it's nothing scientific; a drop in attendance equals a drop in income. In the summertime, members have graduations to attend, travel and vacation plans, or are just flat out goofing off. This was the main concern for the finance committee heading into the summer: Would we be able to meet our financial obligations without spending down a significant amount of our

reserves? By the end of June, as it turns out, our year to date income exceeded our year to date expenses for the first time in 2008. While we have no reasonable expectation for this trend to continue for the remainder of the summer, we'd like to take this time to thank and commend the members of our congregation for their continued faith and support!

Compared to year to date June 2007, our total income year to date in June 2008 is up 18%. July 2008 marks the one-year anniversary of Rev. Ken Walden's service as our Pastor. The financial progress we've made since he took the lead of our ministry speaks volumes to his vision and leadership qualities, as well as the dedication and support of our members alongside him. Numbers don't lie, and it's already evident that we're approaching a

level of consistency that can sustain our growth through the 3-year Strategic Plan.

A major part of the finance committee's duty is to ensure that our ministry's bills are paid and the lights are kept on. The other major aspect of our duty is to efficiently allocate funds to fulfill our ministry's growth. It's not an easy task, given our limited resources and obligation to make fiscally responsible decisions. While we walk the line between those two sometimes conflicting objectives, we ask for God's guidance on our journey.

Enjoy the rest of your summer!

In God we trust,

Finance Committee
Rene Ramos
Dulce Gunning
Peju Ariori

SUMMARY OF THE CALIFORNIA-PACIFIC ANNUAL CONFERENCE

June 18-22 2008 at the University of Redlands

By Larry Hygh, Jr., Conference Communications Director

More than 1800 laity and clergy from across Southern California, Hawaii, Guam and Saipan gathered June 18 to 22 at the University of Redlands in Redlands, California, for the 2008 California-Pacific Annual Conference. This year's theme was "To Be The Cup Overflowing With Joy!" Bishop Mary Ann Swenson opened worship proclaiming, "Joy comes as a gift that cannot be manufactured!"

Bishop Hope Morgan Ward of the Mississippi Annual Conference led Bible study. Bishop Ward examined the Book of Ruth and said, "We're all midwives to one another as we give birth and bring new life to the world!" She also examined the "Parable of the Sower" and asked the question, "How do we live between the planting and the harvest?" Conference members gathered in Wesley Circles following the morning Bible studies for discussion and prayer.

The Conference continued a new pattern of welcoming a lay person to preach during the Annual Session. Lewis "Bob" Crownover, a lay member of First United Methodist Church Redondo Beach, was selected through an audition process and spoke during a special service of baptism about his faith journey, which included coming back from homelessness.

In legislative action, the Conference responded in several ways to recent actions of the California Supreme Court. In early May, the Court struck down the state's ban on same-sex marriage in a broadly worded decision that would invalidate virtually any law that discriminates on the basis of sexual orientation. The 4-3

ruling declared that the State Constitution protects a fundamental "right to marry" that extends equally to same-sex couples.

The Conference passed three resolutions surrounding the issue of same-sex marriage in California. One of the resolutions focused on a pastoral response to the legality of same gender marriage in California. The second resolution entitled, "Affirmation of Marriage Equality in California" calls on the California-Pacific annual Conference to celebrate the Supreme Court decision regarding marriage equality. The third resolution was in response to an initiative on the California State ballot this coming November, the "California Marriage Protection Act", which would amend the State Constitution to define marriage as a union "between a man and a woman" and undo the ruling which found that discrimination on the basis of sexual orientation was unconstitutional. The Conference resolution entitled "Protecting Marriage Equality in California" was passed in opposition to this state initiative and called upon the church to be actively involved in protecting the civil rights of all Californians as they pertain to the right to civil marriage.

Prior to closing worship, the Rev. Mark Ulrickson, Santa Ana District Superintendent and Dean of the Cabinet, read a statement from the Cabinet in response to inquiries regarding same gender marriages. Ulrickson said, "Neither our actions nor the actions of the State of California change the present Discipline of the United Methodist Church." He further stated, "Despite our diverse individual perspectives, we are obligated to process complaints arising from breaches of these provisions in a manner appropriate to the circumstances." He further stated, "As we seek to remain in compassionate solidarity with our gay and lesbian brothers and sisters, this may be a time to

promote ecumenical partnerships and a variety of engaging ministries."

More than 225 youth participated in the annual Youth Day and raised funds for 1,000 bed nets for the "Nothing But Nets" campaign.

In other business, conference members:

- Adopted a 2009 budget of \$12,906,072, representing an increase of .77 percent.
- Collected offerings: Domestic Disaster Response \$4200; Nothing But Nets, \$9500; Global Disaster Response \$3300; Conference Youth Endowment Fund, \$3400; and Bishop's Designation for Children, \$3000.
- Raised \$905 in the annual clergy basketball game for charity to benefit Nothing But Nets.
- Adopted a resolution encouraging all churches in the Conference to calculate their carbon footprint on a biennial basis and become carbon neutral by the year 2020.

During Conference Session:

- Bishop Swenson ordained seven elders in full connection; received one candidate into full connection; commissioned four as probationary elders; commissioned one as a probationary deacon.
- Celebrated the retirement of 25 active clergy representing more than 656 years of active ministry.
- Endorsed the Rev. Dr. Grant Hagiya, Executive Director of the Conference's new Center of Leadership Excellence, for the Episcopacy.

Membership of the United Methodist Church now stands at 84,812 down 2,265 from the previous year. Worship attendance stands at 51,227 up 411 from the previous year. Church school attendance stands at 12,814, down 613 from the previous year.

School of Christian Mission 2008

By Kevin Gibson

While walking around the Chapman College campus, four words are consistently displayed – **BUILDING CHARACTER – TRANSFORMING LIVES.**

The School of Christian Mission 2008 established this mantra as its contents built the character and transformed the lives of those in attendance with its' theme "LIVING THE SACRED".

While this was my second experience, this was the largest contingent of "first-timers" attending the school; with five sets of two generations, in addition to the first time for 12 youth in the 7-11 age category.

Our Spiritual Growth Study: **I Believe in Jesus** was defined as follows: **To believe in Jesus** is to love as God loved and live as Christ lived, valuing all creation. **To believe in Jesus** is to live in the way of Christ, freeing the oppressed, healing the sick and wounded, clothing the naked, welcoming all. **To believe in Jesus** is to follow the sacred commandment to love as God loved. **To believe in Jesus** is to embrace the sacredness of life.

Rev. Domingo of Hawaii – encouraged us to delve deep in our personal spiritual journey to realize the freedoms belief in Jesus brings. These sessions were very liberating and may shake up some congregations as the women were pumped – so watch out!!

Geographic Study: Israel-Palestine – This is the second half of the 2 year study of Israel-Palestine. We learned at the introduction of this study last year that God has given humanity the gift of life and relationship. Too often we have created barriers between people and lands. We have acted in ways that violate the sacredness of life and do not make for peace. This year has brought about many changes in this region and as followers of Christ and as Christians in a community; we have deepened our understanding of what it means to live in sacred harmony. During our Plenary session we explored with open hearts and open minds the stories that are only small pieces in their multi-faceted existence. We were forced to discern God's direction amidst so much complexity. In a moving act of consciousness we all wrote personal prayers for peace with justice, placing them on a common table followed by a circle of prayer for peace with justice in a land of many stories, perspectives and history.

Our new course of study is **GIVING OUR HEARTS AWAY: NATIVE AMERICAN SURVIVAL**—"God saw everything the he had made, and indeed it was very good" concludes the unfolding story of God's creation of the earth and all its living creatures as revealed in Genesis, Chapter 1. In our class study introduction to the Native American the answers to the guiding question of how we, as God's people, understand the story in the midst of human acts of racism, violence, and

earthly destruction.

We were introduced to Native American traditions that teach us that creation includes all that comes from God and all that comes from the heart and mind of God is sacred. Native traditions call on its people to value life as God values life. To be a created people is to be relationally connected to all people everywhere, as well as to all God has created.

An Overview of Music Ministry in WUMC English Ministry

By

Penny Pan, Music Administrator

It has been my great pleasure to proudly start the Chancel choir in October 2008, and Men's choir January 2008. Both choirs are formed by volunteer-congregational-members from our own church. The Chancel choir practices every Sunday morning at 8:30 am to 9:30 am in the choir room, and Men's choir practice every first and third Sundays at 11:30 am in the library. Not all the members from both choirs understand music fundamentals or even read music, but because of their passion for singing, support for choirs, and the kind heart of serving God they always do their very best. In addition, the rehearsal always fills with love, supports, and fun from each choir member. I am certain that all of you can see and hear their great effort during each musical presentation.

Since October, the Chancel choir has experienced different musical styles such Spiritual, Gospel, and traditional anthem. Men's choir also brought variety of musical styles and hymns to the Sunday service such as Gospel songs with conga drum, African Spiritual and even one Taiwanese hymn!

We are very fortunate to have a cellist, Jonathan Lusher, from our church to regularly perform for offertory and occasionally prelude or special music. In the past special occasions, we had violin soloist, string quartet and looking forward to bring in more musicians in the future.

Imaging absolutely no music in a Sunday service... you would then understand and realize how important the role of music ministry in a church. I extend my invitation to any congregational members in joining me in WUMC music ministry. The music ministry in WUMC English division needs and greatly appreciate everyone's any kind of support.

WILSHIRE UNITED METHODIST CHURCH ANNUAL FAMILY PICNIC!

*UNITY AMONG OUR ENGLISH, HISPANIC, KOREAN, AND FILIPINO
MINISTRIES CELEBRATING AS ONE IN JESUS CHRIST*

When: September 20, 2008

**Where: PAN PACIFIC PARK (PICNIC AREA 1)
7600 BEVERLY BLVD., LOS ANGELES, 90036**

Time: 10:00AM—3PM

FREE! FREE! FREE!

COME AND ENJOY FOOD FROM MANY CULTURES INCLUDING:

**BARBECUED CHICKEN, BEEF & PORK,
HOTDOGS & HAMBURGERS FOR THE KIDS!**



Activities For All!

Youth Bible Contest & Art Contest
Relay Races
Tug of War
And Lot's More!

COME AND ENJOY THE FUN!

Be sure to Sign Up for All Events at Church

**FOR MORE INFORMATION CONTACT
THE CHURCH OFFICE AT:**

(323)931-1085

and/or visit

www.ewilshireumc.org

Wilshire United Methodist Church (English Ministry)

4350 Wilshire Blvd. Los Angeles, CA 90010

Website: ewilshireumc.org

E-Mail: admin@ewilshireumc.org

Tel: (323) 931 1085

Fax: (323) 931 0203

August 2008

Worship Service every Sunday at 10am in our beautiful Sanctuary

SUN	MON	TUE	WED	THU	FRI	SAT
					1	2
3 Staff Parish Relations Com. 11:45am #203	4	5	6 "Search me, O God, and know my heart" Psalms 139:23	7	8 7pm-Friday Night Live Re- ception	9 10:30am-UMW Assembly
10 Nurturing Committee Noon Library	11 Empowering 1:00pm	12	13 "Rescue me, O LORD, from evil men" Psalm 140:1	14	15	16
17 Finance Committee 11:45am #203	18	19	20 6pm Lay Leadership Committee 7:00pm Church Ser- vice Coordinating Team # 203	21	22 7pm-Friday Night Live Re- ception	23 9:00am-UMM #203
24/31 Welcoming 11:45am #203 Missions/Serving Team Noon #209	25/32	26 "Give thanks to the God of heaven" Psalm 136:26	27	28 Stewardship Committee 7:00pm # 203	29	30

- Rev. Dr. Ken J. Walden and some of the congregational leaders will read your three suggestions you submitted for consideration in our 3-Year Strategic Plan and ways you will help to accomplish them.

Wilshire United Methodist Church (English Ministry)

4350 Wilshire Blvd. Los Angeles, CA 90010

Website: ewilshireumc.org

E-Mail: admin@ewilshireumc.org

Tel: (323) 931 1085

Fax: (323) 931 0203

September 2008

Worship Service every Sunday at 10am in our beautiful Sanctuary

SUN	MON	TUE	WED	THU	FRI	SAT
	1	2 "Give thanks to the God of heaven" Psalm 136:26	3	4 Board of Trustees 7:00pm Room 203	5	6
7 Staff Parish Relations Com. 11:45am #203	8 Empowering 1:00pm	9	10	11	12 7pm-Friday Night Live Reception	13 10:30am-UMW
14 Nurturing 11:45am Library	15	16 "Rescue me, O LORD, from evil men" Psalm 140:1	17 6pm Lay Leadership Committee 7:00pm Church Service Coordinating Team # 203	18 Stewardship Committee 7:00pm Room 203	19	20 9:00am-UMM #203 10:00am Wilshire Picnic-Pacific Park
21 Finance Committee 11:45am #203	22	23	24	25	26 7pm-Friday Night Live Reception	27
28 Welcoming 11:45 # 203 Serving/Missions 11:45am Library	29	30				

• Rev. Dr. Ken J. Walden and some of the congregational leaders will read your three suggestions you submitted for consideration in our 3-Year

CELEBRATING CULTURAL DIVERSITY: NEW MEMBERS JOIN ENGLISH MINISTRY

By Lina Ramos

There seems to be a beacon of light that draws people to Wilshire United Methodist Church. Our church has been renewed and re-energized. God has provided us with new leadership under the Reverend Dr. Ken Walden. The seedlings that he has sown are beginning to show growth and vitality. Praise God! We profess like Job that our Redeemer lives!

Our 2 new members come from 2 different worlds, 2 different continents, 2 different cultures. One comes from Asia, the other from Africa. Yet, we are all God's creation. Our church mission is to welcome and celebrate diversity: nurture spirituality and reach out with compassion.



JOY DAY

Joy is a native of Nigeria, West Africa. She brings to us a God given talent: music and song. Church music has inspired Joy and she found her niche by joining the choir. Joy defines herself as a musician who writes and composes music. Her talents extend to painting, dabbling in shapes and colors.

Ms. Day is also known by her African name of Bekinba

Iseyeobo. Oftentimes she would proudly display her African heritage by dressing up in her festive native attire. She finds Rev. Walden's Sunday sermons inspiring and approves highly of our minister's pastoral leadership.

In her own words, she concludes, "God has blessed me and led me the way where I belong."

NAW HSER HKU

Naw Hser comes from the country of Myanmar. Myanmar is the largest country by geographical area in Southeast Asia bordered by Chin, Laos, Thailand, Bangladesh, and India. The country's name has been changed from Burma to Myanmar in 1989.

Naw Hser's family live in a city called Patheim City, 4 hours drive from the capital city of Rangoon. Two years ago, she came to the U.S. as a consular employee of the Korean embassy in Los Angeles. While Myanmar is predominantly 87% Buddhist, Naw Hser is a Christian which consist only of 4% of the population. She found a sanctuary and a sense of family at our church and expresses her gratitude for all the kindness and the warm reception she has received from the congregation. It means so much when you're new and alone in a country where she has to adapt to a new language and culture. Hopefully, Naw Hser plans to attend English and computer classes. She also requested to get her a Methodist Hymnal, so she could practice her singing. A potential choir member?

Olympic Fever

By Lina Ramos

Beijing 2008 Summer Olympics, Beijing, China
Starts August 8, 2008

Theme: One World, One Dream (displayed at the Great Wall of China in 2007)

Opening Ceremonies: Birdnest National Stadium

Having visited China in November 2007, I had the opportunity to visit the official Olympic stores in Beijing and bought souvenirs before they were officially opened to the world. The official mascots were one of them.

THE FIVE FUWA/MASCOTS

Like the 5 Olympic Rings, the five Fuwa's will serve as the official mascots of the Beijing 2008 Olympic Games, carrying the message of friendship and blessings from China to children all over the world. The five Fuwas also embody the characteristics of four of China's most popular animals: the fish (Beibei), the panda (Jingjing), Huanhuan is the Olympic flame, the Tibetan Antelope is Yingying, and Nini is the swallow. At the heart of their mission, the five Fuwas will seek to unite the world in peace and friendship through the Olympic spirit and spread it's theme of "One World, One Dream."



A Tale of Balancing Quality and Cost as Effective Stewardship

By: John J. Guillén, Ph.D.

A young man named Bob fell in love with his boss' daughter, who owned a construction firm (Rich Construction, Inc.). Bob proved to be a hard worker and a quick learner of his trade, which earned him the promotion to become a foreman. Mr. Rich had confidence in Bob's abilities and trusted him professionally and personally, especially since he would potentially become his son-in-law. One day Mr. Rich decided to assign Bob as a Project Manager for the construction of a large scale mansion for a very special and undisclosed client.

Bob was excited about this opportunity and immediately poured through all the construction documents, budget, cost estimates, and blueprints and gladly accepted the project. In reviewing the budget and cost-estimates, he noticed that the budget was generously set with high overhead and contingency amounts. The mansion also included top of the line fixtures and materials. With all his knowledge of the trade and eagerness to prove himself, he decided to use less expensive materials and given the high contingency budget, he could safely avoid using the entire budget and perhaps pocket the difference without anyone noticing the lesser quality of fixtures or materials. Bob quickly contacted his usual contractors and suppliers and started a deceptive process of buying a lesser quality product than called for in the blueprints. Eventually, the contractors and suppliers got a hint of the budget and realized that they also could make more money by raising their prices for the lesser quality product. This combination of personal greed and lack of competition and controls led to spending more than was originally budgeted for the higher quality materials.

By the time of the inspection of the project, he was behind schedule, and the money was diminishing more and more to the point of exhaustion. Mr. Rich told Bob that the project needed to be completed in 30 days, for the client was in need of an earlier occupancy. As the deadline approached, he went to Mr. Rich and asked for a two weeks extension to complete the project. Mr. Rich granted Bob's request.

Bob started demanding longer hours from his contractors and workers to make up for loss time and to finish the project within the two weeks. On the first day of the two week extension, while finishing the master room on the second floor, he noticed a problem, on the east wall, a wedge (triangular) shaped gap; the catheti measuring: 4-ft (opposite), and 6-ft (adjacent), and knowing that the time was running out, Bob decided that framing that wall with mirrors would be a quick and inexpensive way to cover up the mistake. As the project was coming to its end, Bob realized that he had spent the entire budget and the staircase had not been finished, so he decided to use wood-like composite material, but even that was too expensive to afford. The only alternative was to use recycled pressboards and cover them with cardboard and laminated paper simulating mahogany. Bob was happy to have completed the project with his innovative solutions and ready to show it to his boss, and to meet the owner of the mansion, for the first time.

The time came! A red ribbon and bow adorned the front door and like a Hollywood scene, Bob and all his workers lined up waiting for his boss and the owner to cut the ribbon and to showcase the mansion.

Finally, Mr. Rich arrived with some close relatives and his daughter (bride-to-be). Mr. Rich with a pair of scissors on hand and the keys to the mansion said to Bob: "Son, these are your keys and my gift to you. Go ahead and cut the ribbon of this beautiful mansion you built for yourself."

So what lessons can we learn from this story? First of all, good stewardship requires personal integrity and commitment. It is not enough do the job, but to do it well. This requires knowing the two sides of the coin of cost effectiveness. Sometimes we may be simply lured by a cheaper price without considering quality. In the end, what appears to be the less expensive choice may end up costing more due to the lack of durability or poor quality. The other important lesson is that good stewardship requires high moral and ethical behavior all the time. This is the hardest dimension to master, but at the end it yields trust, confidence, accountability, and sense of service above self. Finally, good stewardship requires humility. In approaching the project, Bob should have reached out to others more knowledge to make him more successful, and also he shouldn't allowed his personal greed or interest to get in the way of doing the optimum best. In his case, Bob mismanaged what was entrusted to him and reaped the fruits of his own labor. He was careless, inexperienced and these contributed to his disloyalty and moral compromise, ending in the digging of his own pit (Pr. 26:27 cf. 28:10; Esth. 7:10)

The Old Testament contains many parables that are known as "Mashal," which means, "Wisdom saying," a term that is also applied to the Proverbs of Solomon (Míshlê Shlomoh). The prophets brought the word of God to His people (2 S. 1:1-15; et. Al); sometimes it may sound as a reprimand, but it was His observation intended for them to correct their actions, but His everlasting love was always present to bring them back to rest in His arms to start a new beginning.

We have been meditating on the parables of Jesus Christ, on Matthew, Chapter 13. The explanation for the use of parables was a fulfillment of God's voice (Mt 13:34, 35 cf. Ps. 78:2). Jesus is calling us to be anchored in the word of God to find hope in the midst of despair (Jn.5:39, 40; Mt. 11:28-30), to abide in Him and in His love, and to love one another, so the world will know that we are His disciples (Jn. 13:34, 35), and letting no one seek his own welfare, but that of his neighbor (1 Co. 10:24), thus having the same mind, maintaining the same love, united in spirit, intent on one purpose (Phil. 2:2). Therefore, we have to recognize the mission of the church, and in this endeavor with humility and gentleness, with patience, we have to tolerate one another in love to preserve the unity of the Spirit in the bond of peace, and forgiving one another as Jesus forgave us (Ep. 4:2; Col. 3:13). Let's celebrate a new beginning as people of God!

"audi consilium et suscipe disciplinam ut sis sapiens in novissimis tuis" (Prv. 19:20; cf Prv. 8:33; 12:15; 15:32)

LAUGH WITH CELESTE

By Celeste Slaughter

While attending a marriage seminar on communication, David and his wife listened to the instructor declare, "It is essential that husbands and wives know the things that are important to each other." He addressed the man: "Can you describe your wife's favorite flower?" David leaned over, touched his wife's arm gently and whispered, "Pillsbury All-Purpose, isn't it?"

LABOR DAY

Web article downloaded by Ted Slaughter

Labor Day is a [United States federal holiday](#) observed on the first Monday in September. The holiday originated in 1882 as the [Central Labor Union](#) (of New York City) sought to create "a day off for the working man".

[Congress](#) made Labor Day a federal holiday in 1894.^[1] All fifty states have made Labor Day a state holiday.

Traditionally, Labor Day is celebrated by most Americans as the symbolic end of the summer.

Labor Day has been celebrated on the first Monday in September in the United States since the 1880s. The form for the celebration of Labor Day was outlined in the first proposal of the holiday—a street parade to exhibit to the public "the strength and esprit de corps of the trade and labor organizations", followed by a festival for the workers and their families. This became the pattern for Labor Day celebrations. Speeches by prominent men and women were introduced later, as more emphasis was placed upon the economic and civil significance of the holiday. Still later, by a resolution of the American Federation of Labor convention of 1909, the Sunday preceding Labor Day was adopted as Labor Sunday and dedicated to the spiritual and educational aspects of the [labor movement](#).

Today, Labor Day is often regarded as a day of rest and, compared to the [May 1 Labour Day celebrations](#) in most countries, parades, speeches or political demonstrations are more low-key, although especially in election years, events held by labor organizations often fea-

ture political themes and appearances by candidates for office. Forms of celebration include picnics, barbecues, fireworks displays, water sports, and public art events. Families with school-age children take it as the last chance to travel before the end of summer. Some teenagers and young adults view it as the last weekend for parties before returning to school. However, of late, schools have begun well before Labor Day, as early as the July 24 in many urban districts, including Nashville and Atlanta. In addition, Labor Day marks the beginning of the season for the National Football League and NCAA College Football. The NCAA usually plays their first games the weekend of Labor day, with the NFL playing their first game the Thursday following Labor Day.



**Visit Our Worship Services
Every
Sunday at 10 a.m.**

HEALTH NEWS

By Turusew Wilson

Heart Disease: Heart-Healthy Diet

A heart healthy diet begins by paying close attention to what you eat. You can reduce your chance of developing atherosclerosis, the blocked arteries that cause heart disease with a heart healthy diet. If the artery-clogging process has already begun, you can slow the rate at which it progresses.

Feed Your Heart Well

Feeding your heart well is a powerful way to reduce or even eliminate some risk factors. Adopting a heart-healthy nutrition strategy can help reduce total and LDL cholesterol (the “bad” cholesterol), lower blood pressure, lower blood sugars, and reduce body weight. While most dietary plans just tell you what you CAN’T eat (usually your favorite foods!), the most powerful nutrition strategy helps you focus on what you CAN eat. In fact, heart disease research has shown that adding heart-saving foods is just as important as cutting back on others.

Here are nine nutrition strategies to reduce your risk:

1. **Eat more fish.** Fish is a good source of protein and other nutrients. It also contains omega-3 fatty acids, which may help reduce the risk of heart disease and stroke.
2. **Eat more vegetables, fruits, whole grains, and legumes.** These beautiful and delicious wonders of nature may be one of the most powerful strategies in fighting heart disease.
3. **Choose fat calories wisely.** Keep these goals in mind:
4. **Limit total fat grams.**
5. **Eat a bare minimum of saturated fats and trans fats** (for example, fats found in butter, margarine, salad dressing, fried foods, snack foods, sweets, and desserts).
6. **When you use added fat, use fats high in monounsaturated fats** (for example, fats found in olive and peanut oil).
7. **Eat a variety – and just the right amount – of protein foods.** Commonly eaten protein foods (meat, dairy products) are among the main culprits in increasing heart disease risk. Reduce this nutritional risk factor by balancing animal, fish, and vegetables sources of protein.
8. **Limit cholesterol consumption.** Dietary cholesterol can raise blood cholesterol levels, especially in high-risk people. Limiting dietary cholesterol has an added bonus: You’ll also cut out saturated fat, as cholesterol and saturated fat are usually found in the same foods. Get energy by eating complex carbohydrates (whole-wheat pasta, sweet potatoes, wholegrain breads) and limit simple carbohydrates (regular soft drinks, sugar, sweets). If you have high cholesterol, these simple carbohydrates exacerbate the condition and may increase your risk of heart disease.
9. **Feed your body regularly.** Skipping meals often leads to overeating. Eating five to six mini-meals is the best way to control blood sugars, burn fat calories more efficiently, and regulate cholesterol levels.

Other Heart-Healthy Strategies

- **Reduce salt intake.** This will help you control your blood pressure
- **Exercise.** The human body was meant to be active. Exercise strengthens the heart muscle, improves blood flow, reduces high blood pressure, raises HDL cholesterol (“good” cholesterol), and helps control blood sugars and body weight.
- **Hydrate.** Water is vital to life. Be sure to stay adequately hydrated.
- **Enjoy every bite.** Your motto should be dietary enhancement, not deprivation. When you enjoy what you eat, you feel more positive about life, which helps you feel better. An added bonus is that you eat less when you eat food you love, and that helps control weight and reduce cholesterol levels.



DID YOU KNOW?

by Nancy Brashears

Did you know that Lovely Lane United Methodist Church in Baltimore, Maryland is considered the Mother Church of American Methodism? I was unaware of this fact until my family and I visited Baltimore last month and had the opportunity to attend worship and tour the church building, museum and archives.

In 1772, Joseph Pilmore, one of the English Methodist missionaries to America, met with "a few serious people" and organized the first Methodist Society of Baltimore. From this beginning, Lovely Lane United Methodist Church traces its history. At the first Conference of Preachers in America in 1773, Francis Asbury was assigned as pastor of the Baltimore Methodists and the society began erection of their first building. In 1784, in an effort to organize the growing Methodist movement in the Colonies, John Wesley sent Dr. Thomas Coke from England to America and on December 24th, he convened the "Christmas Conference" at Lovely Lane Meeting House. On Christmas Day, a man by the name of Francis Asbury was elected and ordained a Deacon; on December 26, he was elected and ordained an Elder; and on December 27, he was elected and consecrated a Bishop! Francis Asbury and Thomas Coke together ordained about 68 men into the ministry and they began the work of organizing the Church to which we now belong.

In the 1880s, the Lovely Lane congregation needed a new building and decided to build not simply a new building for their own ministry, but a centennial monument to the founding of the denomination. Ground was broken for this new structure in 1883, the cornerstone was laid in 1884, and three years later, one of the great church buildings in the country stood completed and paid for. The exterior is Romanesque with the imposing tower rising 225 feet. The interior features extensive black birch woodwork. The Chapel windows are by Louis Tiffany. Dominating the Sanctuary is the vaulted dome ceiling, on which is reproduced the heavens as they appeared over the building at 3:00 a.m. on the day of dedication. The oval design was also practical as it made it possible to place all of the 900 seats within a relatively short distance of the pulpit. The building is a designated Architectural Landmark of the City of Baltimore and is entered on the National Register of Historic Places. It is also listed as an attraction in the Automobile Club Tour Book.

Over the more than two centuries of its congregational life, Lovely Lane has provided visionary leadership. The first recorded instance of a woman's preaching in American Methodism took place within this congregation. The first independent women's organization in the denomination originated at Lovely Lane. In 1792, the congregation established a church "for the exclusive use of Colored People", which would become Sharp Street Memorial Church – still one of the most active congregations in the city of Baltimore. Following the Civil War, the congregation helped

found the Centenary Biblical Institute, later renamed Morgan College and currently called Morgan State University.

Today, Lovely Lane Church is a small congregation serving the heart of the city. To United Methodists throughout the country, this Mother Church represents the very roots of our denomination and serves as a constant reminder of the rich heritage of the Methodist experience in America.

CARMEN'S PASTA SALAD

By Eleanor Minter

Ronzini Rainbow Pasta (or any brand rainbow pasta)
Cherry Tomatoes
Green, Orange, Yellow Red bell Peppers
Shaved Parmesan Cheese (already grated or shaved in package)
Sliced Ripe Olives
Pepperchini Peppers Sliced or cut up (In pickle, olive section)

Fresh Basil
Fresh Tarragon
Fresh Cilantro

Pepper
Garlic Powder
Onion Powder
Pasta Seasoning Blend

Girard's Champagne Salad Dressing

Mix altogether in a large bowl and serve

I can't tell you the portions; you have to decide for yourself.

If I'm making enough for 4-6 people I use:

2-3 cups of pasta;

Pint cherry tomatoes

1 each or 1/2 of the peppers

1 3.8oz can of rip olives

COMING THIS MONTH A SPECIAL EDITION OF "THE VISITOR"

There were too many photos and articles for one publication this month. "The Visitor" has expanded from eight to sixteen pages. Sixteen pages were not enough for full coverage of articles and photos available for publication. In the opinion of the Layout Editor, sixteen pages is at the upper limit for an easy to read newsletter. For the first time during the publication life of "The Visitor" we will have a special edition so that we may do justice to the photos and articles. These articles and photos would have been abbreviated if they had been laid out in the regular edition.

HAPPY BIRTHDAY WILSHIRE FAMILY MEMBERS!

August:

1 ... Walter Floyd
 4 .. Carla Y. Moore
 6 .. Andrew Tryhane
 12 .. Sylvia Williams
 15 .. Nikko Deloney, Jr.
 15 .. Jade Stuart
 17 .. Leticia Aquino
 19 .. Liana Kamila Moore
 20 .. Johann Wilson
 22 .. Loretta Monsanto
 24 .. Margarita Aquino
 25 .. Tyrone Perriott
 27 .. Sammie Mitchell
 30 .. Brandon Scott Cooper

September:

1 .. Gloria Ruddock
 3 .. Ron Stricklan
 7 .. Rose Northern
 7 .. Byrone Collins
 11 .. Kay Marie Longworth
 13 .. Eleanor Minter
 14 .. Felicia Fisher-Shamu
 15 .. Celestine Slaughter
 18 .. Daniel Tryhane
 19 .. Shomari Adio Wheaton
 20 .. Grace Fairweather (Harrison)
 24 .. Joseph Dyer
 26 .. Christopher Argueta
 27 .. Glendafae Woods

We Sing Together: Sowing Seeds of Peace with Harmony

Songs of the African American and Balkan traditions
 Sunday, September 21 ~ 4pm

www.festivalofsacredmusic.org/0921GwenWyatt.html

Wilshire United Methodist Church
 4350 Wilshire Blvd., Los Angeles, CA 90010

[Go Metro](#)

\$20/\$15 students

Tickets & info: <http://www.itsmyseat.com/wfsm>

An intersection of devotional and traditional music, WE SING TOGETHER brings two culturally diverse and outstanding vocal choirs to one of LA's historic cultural monuments. The **Gwen Wyatt Chorale**, a 40-strong multiethnic, multigenerational vocal ensemble, will make a joyful noise in the spirit-lifting tradition of African-American sacred song. Performing a cappella, in the time-honored fashion as coached by the late Dr. Jester Hairston, the Chorale will offer folk spirituals and gospel with accompaniment on djembe, brass quintet, keyboards, and percussion. Discover why the Chorale was honored with this year's Los Angeles Treasure Award.

The accomplished Los Angeles-based women's folk

chorus **Nevenka** has been performing traditional songs from the Balkans and Eastern Europe for nearly three decades. Their repertoire includes songs from Bulgaria, Macedonia, Greece, Albania, Croatia, and from the Sephardic and Roma traditions, which they render with "exquisite harmonies and lilting rhythms that intoxicate" (Los Angeles Daily News) and "irresistible charm" (Los Angeles Times).

UPCOMING EVENT!!!

WHAT: Wilshire United Methodist Church Annual Family Picnic

WHEN: Saturday, September 20, 2008

TIME: 10:00AM – 3:00PM

WHERE: Pan Pacific Park (Picnic Area 1)
 7600 Beverly Blvd., Los Angeles, CA 90036

Come and enjoy a fun day, celebrating our multi-ethnic, multi-cultural congregations (English, Hispanic, Korean, and Filipino ministries).

Food and activities for all!

More information to follow, or contact church office (323) 931-1085. Visit website: www.ewilshireumc.org

WILSHIRE UNITED METHODIST CHURCH
711 South Plymouth Boulevard
Los Angeles, CA 90005

Office: (323) 931-1085 Fax: (323) 931-0203
E-Mail: admin@ewilshireumc.org
Website: ewilshireumc.org

WILSHIRE MINISTRY
CLERGY and PROGRAM STAFF

Rev. Dr. Ken J. Walden, Pastor
Rev. John Guillen, Pastor, Hispanic Ministry

CHURCH ADMINISTRATOR
Rev. Mee Sue Park

Weekly Church Events

Sunday: Worship Service 10:00 a.m. (Sanctuary)
Monday: Bible Study 12:00 noon-1:00 p.m.
(Assembly Room)
Friday: Friday Night Live 7:00 p.m.-8:30 p.m.
(Reception Room)

Music

Penny Pan, Pianist/Organist and Choir Director
Alex Reichert, Organist, Hispanic Ministry

Office Assistant
Ron Strickland

Office Volunteers
Eleanor Minter, Mondays
Dulce Gunning, Mondays and Tuesdays
Lina Ramos, Thursdays

Church Photographer
Len Pringle

Wedding/Special Events
Lori S. Jones, Director
Colin McCaffery, Assistant

Wilshire Preschool
Ernest Stroman, Executive Director

The Wilshire Season
Lori Jones, Chair

Maintenance
Eliseo Lorente
William Hundley

THE VISITOR
Editorial Staff

Ted Slaughter
Layout Editor
Nancy Brashears
Staff Coordination Editor
Marlene McRae
Contributing Editor
Connee Freeman
Contributing Editor
Eleanor Minter
Contributing Editor
Lina Ramos
Contributing Editor
Sammie Mitchell
Article Coordination Editor
Phyllis Hartwell
Honorary Editor

PRAYING FOR YOU

The Wilshire Family surrounds with love and prayers, the following family members who are experiencing health challenges, some of whom cannot join us on Sunday, as well as those who are serving in the military. We also pray for the victims of tragedies throughout our country and the world.

Margaret Bond
Celeste Slaughter
Norman & Edna Francis
Bernetta Hicks
Edward Jivanni Lorrente+
Phyllis Hartwell
Rose Northern
Mary Randall
Audrey Shockley
Doris Howard

Aaron Edwards
Tyronne Perriott+
Mary Ann Johnson
Juel Collins
Constance Orme
Anne Smith
Seth Shockley
Thelma Pittman
Rosalie Turner
Susie Williams

+ Tyrone Perriott is serving in the armed forces. Edward Jivanni Lorrente is also serving in the armed forces and has been deployed to Iraq. Please keep them in your prayers.

MILESTONES

- We are blessed, indeed, to welcome Jeremiah Kiron Middlebrooks, the 10 year old son of Tiffany Cabral, and Zilliah Belisle, 2 year old daughter of Tanya Pitts and Clinton Belisle into our Wilshire Family. Both Kiron and Zilliah were baptized on July 6, 2008.
- Congratulations to Daniel and Lina Ramos who celebrated 36 years of marriage on July 29th. They are the parents of Rene Ramos, the Wilshire Ministry Finance Chair, and Melissa Ramos Kincaid who is married to Paul Kincaid. Tyler Daniel Kincaide, Lina and Daniel's grandson was baptized at Wilshire last year.

THANK YOU LEN PRINGLE!

By Connee Freeman

The Visitor Newsletter staff wishes to extend their heartfelt gratitude to Len Pringle, the Wilshire Ministry official photographer. The wonderful pictures that you enjoy in the Visitor are the result of his painstaking efforts to chronicle the Wilshire Ministry story. We regret, however, that the sharp and clear images of the original photos cannot be reproduced on the Church's current xerox machine. We encourage all of you to view many of the photos that Len takes by going to the Wilshire Ministry website: www.ewilshireumc.org.

**Visit Our Worship Services Every
Sunday at 10 a.m.**

A word from the Word

And unto man he said, Behold, the fear of the Lord, that is wisdom; and to depart from evil is understanding 28:28 (KJV).